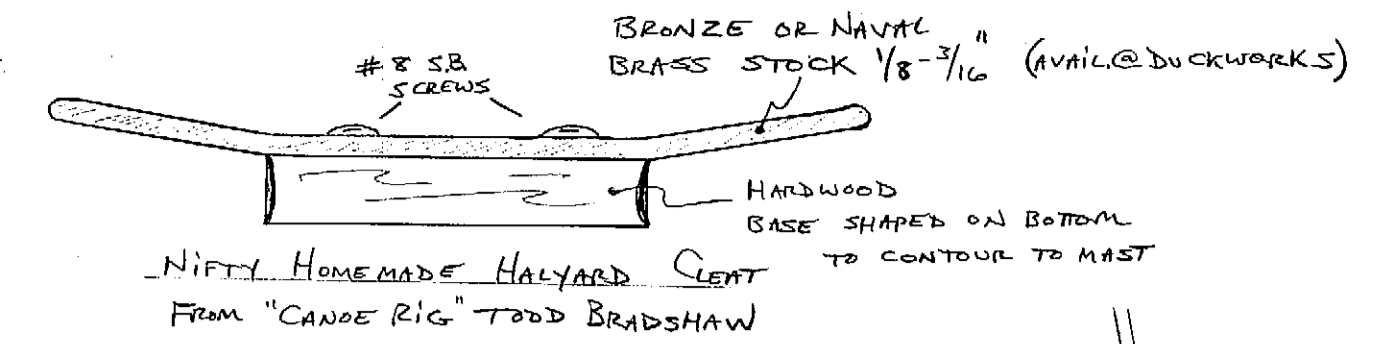
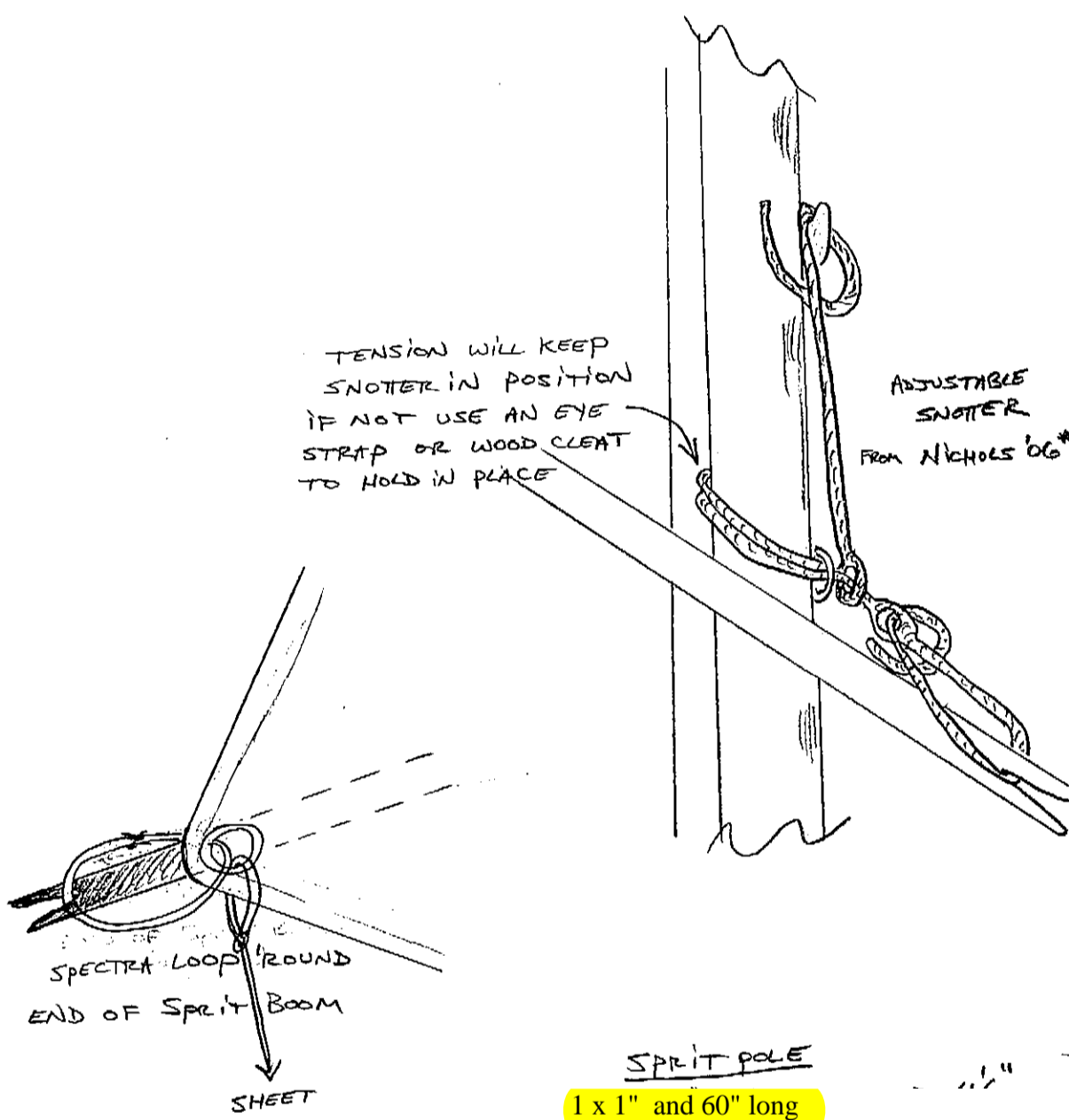
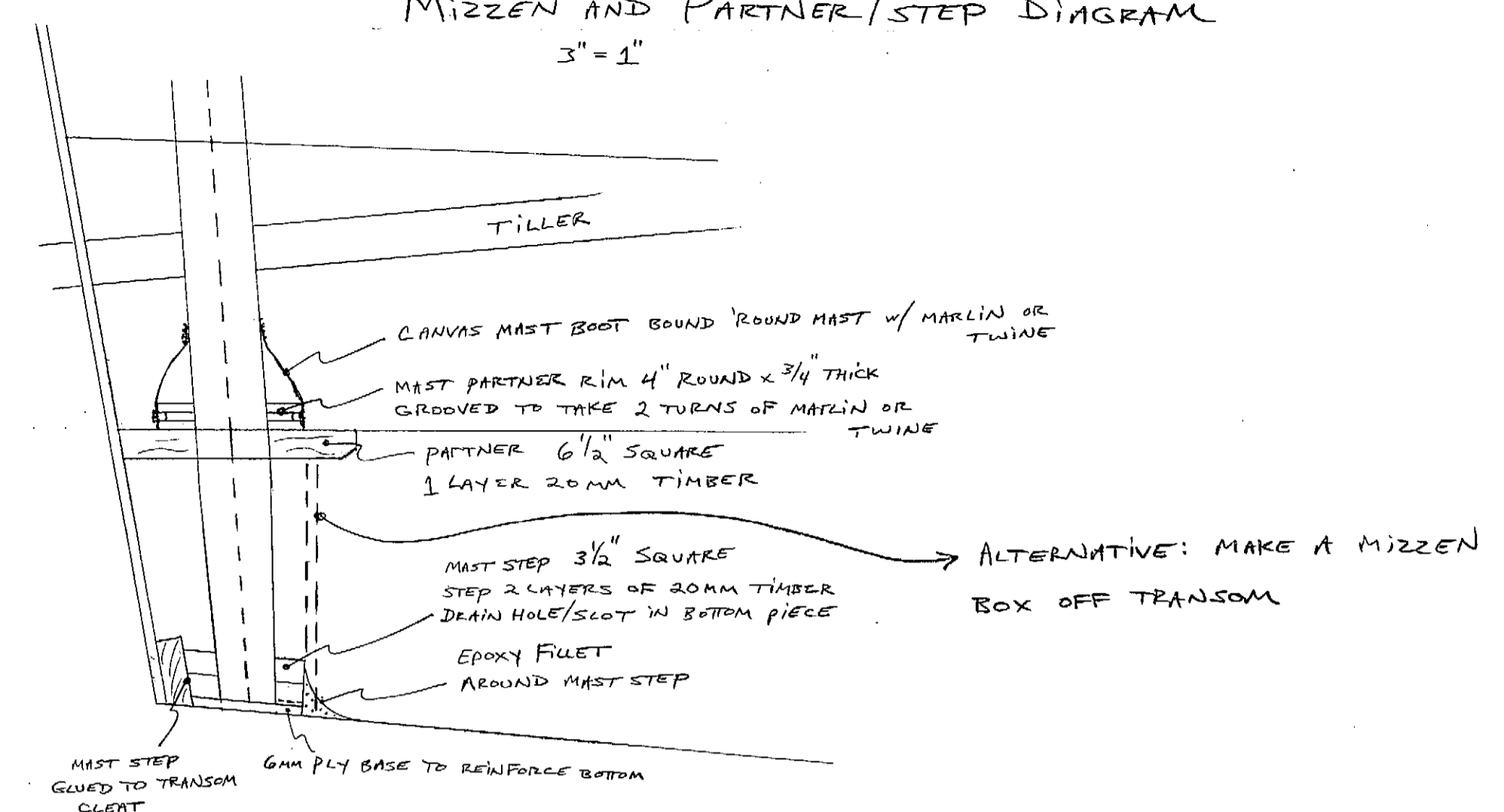


FREE PLAN FOR THE GIS YAWL

THANKS TO MICHAEL STORER, GIS DESIGNER, & TO OUR 1ST YAWL BOATBUILDER JOHN GOODMAN ENJOY YOUR YAWL!
-Clint



MIZZEN AND PARTNER/STEP DIAGRAM
3" = 1"



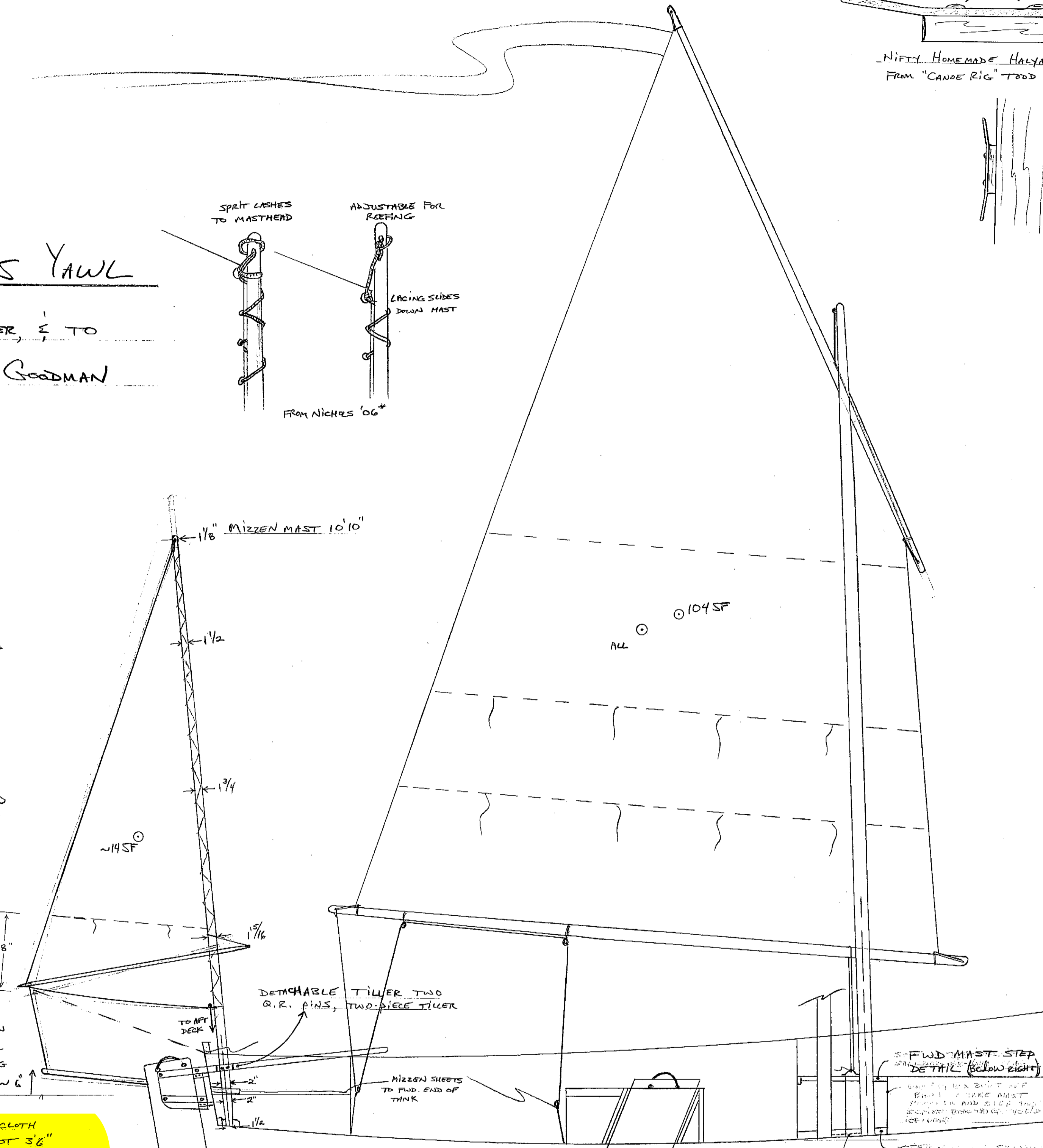
TENSION WILL KEEP SNOTER IN POSITION IF NOT USE AN EYE STRAP OR WOOD CLEAT TO HOLD IN PLACE

Note: it is best if aft end of sprit has a hole so it doesn't get lost!

SPLIT POLE 1 x 1" and 60" long w/ ROUND OVERS TAPER F&A OR USE DOWEL STOCK

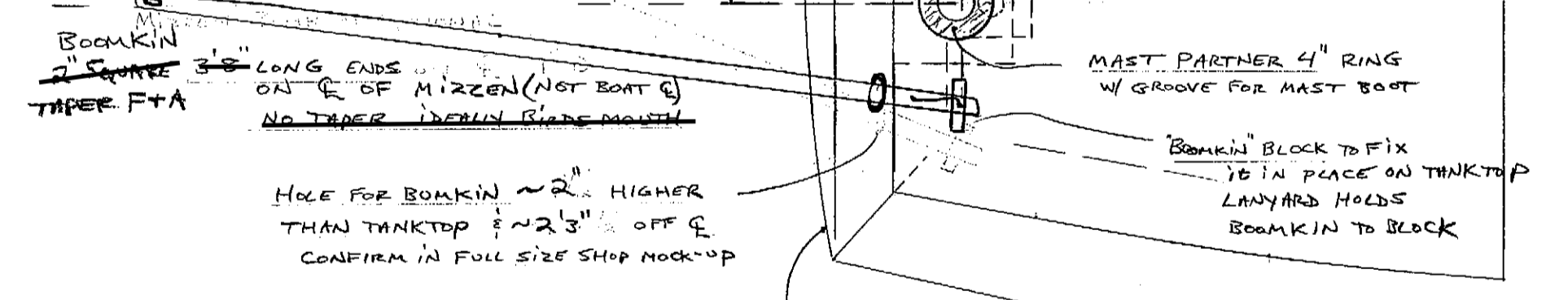
MIZZEN SAIL CUT FLAT 4oz CLOTH LUFF 8'6" LEECH 8'6" FOOT 3'6" FOOT CUT w/ SOME ROUND LEECH STRAIGHT OR w/ SLIGHT HOLLOW (ASK SAILMAKER) ACCOUNT FOR MAST FLEX

* DRAWINGS USED BY PERMISSION FROM DAVID NICHOLS "WORKING GUIDE TO TRADITIONAL SMALL-BOAT SAILS" THANK YOU DAVID! BREAKAWAY BOOKS NY 2006



PLAN VIEW OF TANKTOP AND MIZZEN STEP/PARTNER AREA
1/2" = 1" UNLESS NOTED OTHERWISE

2012 Update: I use a 1 5/8" closet pole tapered at ends for my boomkin. Choose a light weight rod and one without splits in ends. Boomkin 4' long.

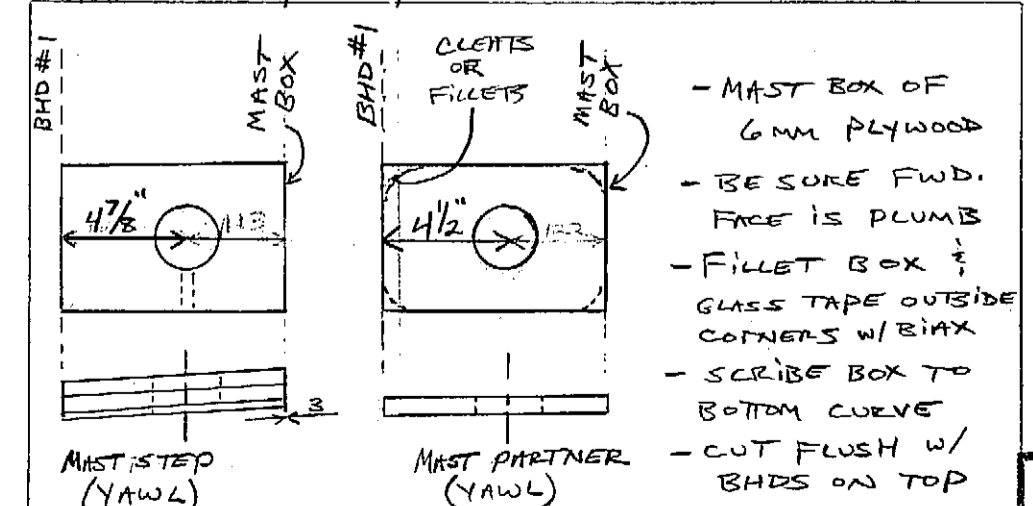


Aug 2011 Note: Some refinements...order an aluminum tube from Metal Xpress. You need a piece 4" OD x 12" long and a wall thickness only 1/16" max. Dado the tube into the step. Capture the top of tube with a plywood ring glued to

CONSTRUCTION NOTES

- TO DETERMINE PARTNER PLACEMENT, LOCATE POINT ON TANK TOP 3 1/4" AWAY FROM AFT FACE OF TRANSM AND " TO STARBOARD OF ♀.
- TO DETERMINE STEP PLACEMENT, LOCATE POINT ON BOTTOM PANEL THAT IS 2 1/4" FWD OF AFT FACE OF TRANSM (YOU MUST TAKE INTO ACCOUNT THE CLEAT ALONG BOTTOM OF TRANSM). THIS POINT SHOULD BE " TO STARBOARD OF BOAT ♀ AND SQUARE TO POINT ABOVE.
- USE THE 4" MEASUREMENT ALONG SHEERLINE TO CHECK THE FACE OF MAST & CHECK THAT MAST ENDS UP SQUARE A SHIPS.
- MORE CONSTRUCTION NOTES TOP RIGHT ON THIS SHEET

DETAIL YAWL RIG MAST PARTNER & STEP



RESOURCES

- CLINT'S WEBSITE CLICK ON GIS PAGE
- MICHAEL'S PAGE RIGGING THE GIS
- STORER WOODEN BOAT FORUM: YAWL THREAD CORNER OF THIS PLAN
- DAVID NICHOLS' BOOK REF. IN LOWER LEFT

GOAT ISLAND SKIFF YAWL RIG

SCALE: 3/4" = 1'	DATE: 1/10/10	CLINTCHASE	DRAWN BY: CBC
CLINTCHASE BOATBUILDER.COM		PORTLAND, MAINE	REVISED: 7/4/10
CLINTCHASE@MAINE.FI.COM		MAINE	DRAWING NUMBER: 1 of 1
WWW.STORERBOATPLANS.COM		THE GIS IS DESIGNED BY MICHAEL STORER	